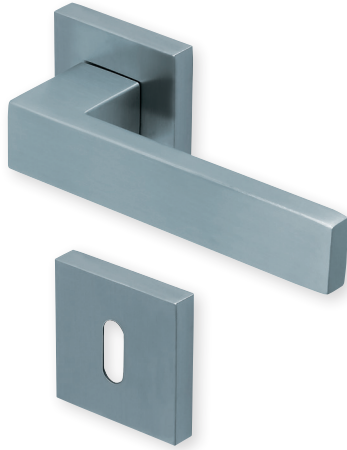
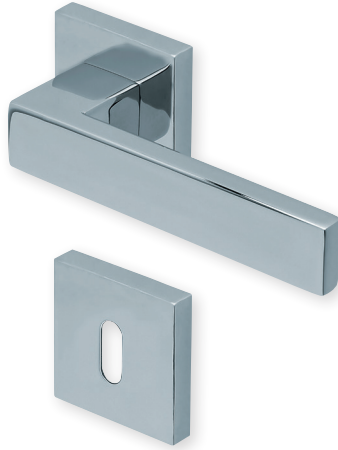


# Form 1005 auf Quadratrosette

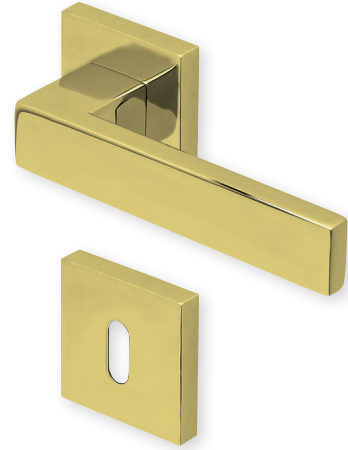
Pullbloc® 3.0 Kugellagertechnik



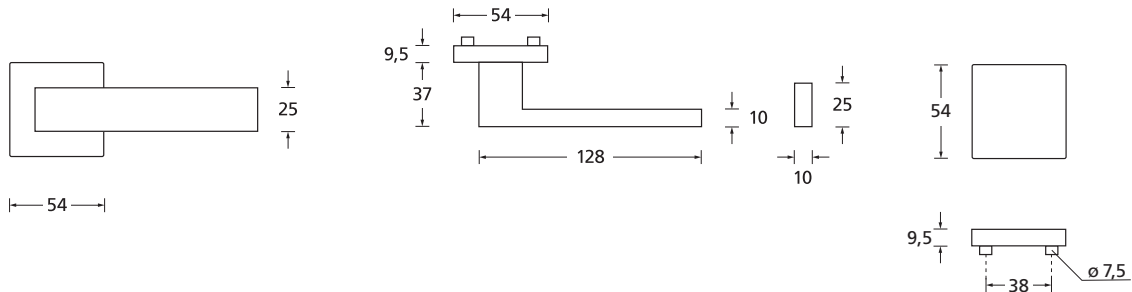
Drücker Edelstahl matt  
Rosette Edelstahl matt



Drücker Edelstahl poliert  
Rosette Edelstahl poliert



Drücker PVD Messinggelb  
Rosette PVD Messinggelb















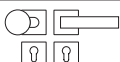



## Details:

<b>Material:</b>	Edelstahl 304 nach AISI-Norm	<b>Standard Türstärke:</b>	38 - 42 mm
<b>Oberflächen:</b>	Edelstahl matt Edelstahl poliert PVD Messinggelb	<b>Verschraubung:</b>	selbstschneidende Durchzugsschrauben, ab 42 mm Türstärke: Gewindehülsen und M4 Schrauben
<b>Technik:</b>	Pullbloc® 3.0 Kugellagertechnik, Kugellager aus gehärtetem Stahl, beidseitig 2 Federstahl-Druckfedern, 30 Jahre Funktionsgarantie	<b>Vierkantmaß:</b>	8 mm Vierkantstift (8,5 mm Distanzhülse)
		<b>Gebrauchskategorie:</b>	3 - DIN EN 1906 Klassifizierung 3   7   -   0   0   4   0   B

# Form 1005 auf Quadratrosette

Pullbloc® 3.0 Kugellagertechnik



				
		Edelstahl matt	Edelstahl poliert	PVD Messinggelb
	OS - Garnitur (ohne Schlüsselrosette)	PB3.0-Q10050S	PB3.0-QP10050S	PB3.0-QPVM10050S
	BB - Garnitur	PB3.0-Q10050	PB3.0-QP10050	PB3.0-QPVM10050
	PZ - Garnitur	PB3.0-Q10052	PB3.0-QP10052	PB3.0-QPVM10052
	Blind - Garnitur	PB3.0-Q10051	PB3.0-QP10051	PB3.0-QPVM10051
	RZ - Garnitur	PB3.0-Q10058	PB3.0-QP10058	PB3.0-QPVM10058
	WC - Garnitur	PB3.0-Q10053	PB3.0-QP10053	PB3.0-QPVM10053
	WC - Garnitur rot/weiß Anz.	PB3.0-Q100531	PB3.0-QP100531	PB3.0-QPVM100531
	WC - Garnitur rot/grün Anz.	PB3.0-Q100532	PB3.0-QP100532	PB3.0-QPVM100532
<b>Wechsel-Garnitur</b>				
	PZ-WG - Knopf ger. DIN R/L	PB3.0-Q10055/6	PB3.0-QP10055/6	PB3.0-QPVM10055/6
	PZ-WG - Knopf gekr. DIN R/L	PB3.0-Q100551/61	PB3.0-QP100551/61	PB3.0-QPVM100551/61
	PZ-WG - Zyl. Knopf ger. DIN R/L	PB3.0-Q100552/62	PB3.0-QP100552/62	PB3.0-QPVM100552/62
	PZ-WG - Zyl. Knopf versetzt. DIN R/L	PB3.0-Q100553/63	PB3.0-QP100553/63	PB3.0-QPVM100553/63
<b>Drückerpaar</b>				
	ohne Rosetten	D10050	DP10050	DPVM10050

## Technik:

### Pullbloc® 3.0 Kugellagertechnik

Wartungsfreie Kugellager aus gehärtetem Stahl, 4 starke vorgespannte Druckfedern, Stütznocken, Basis aus glasfaserverstärktem Polyamid und selbstschneidende Durchzugsschrauben (ab 42 mm Türstärke: Gewindehülsen und M4 Schrauben).

