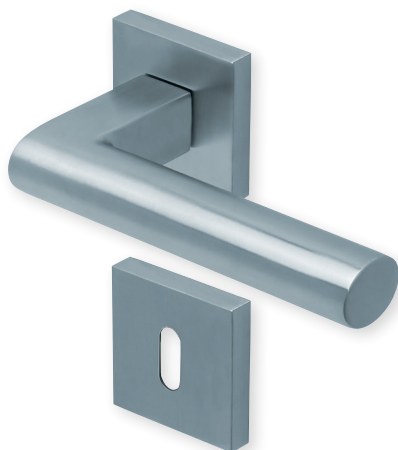
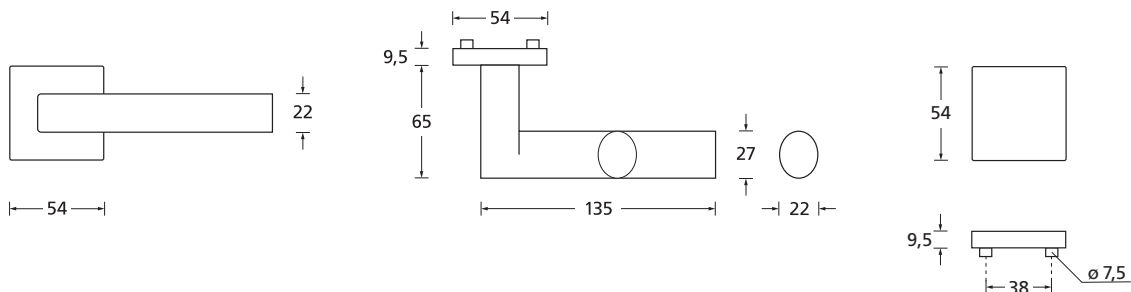


Form 1011 auf Quadratrosette

Pullbloc® 3.0 Kugellagertechnik



Drücker Edelstahl matt
Rosette Edelstahl matt



Details:



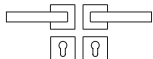










Material: Edelstahl 304 nach AISI-Norm
Oberflächen: Edelstahl matt
Technik: Pullbloc® 3.0 Kugellagertechnik, Kugellager aus gehärtetem Stahl, beidseitig 2 Federstahl-Druckfedern, 30 Jahre Funktionsgarantie

Standard Türstärke: 38 - 42 mm
Verschraubung: selbstschneidende Durchzugsschrauben, ab 42 mm Türstärke: Gewindehülsen und M4 Schrauben
Vierkantmaß: 8 mm Vierkantstift (8,5 mm Distanzhülse)
Gebrauchskategorie: 3 - DIN EN 1906
Klassifizierung 3 | 7 | - | 0 | 0 | 4 | 0 | B

Form 1011 auf Quadratrosette

Pullbloc® 3.0 Kugellagertechnik



Rosettengarnitur		Edelstahl matt
	OS - Garnitur (ohne Schlüsselrosette)	PB3.0-Q10110S
	BB - Garnitur	PB3.0-Q10110
	PZ - Garnitur	PB3.0-Q10112
	Blind - Garnitur	PB3.0-Q10111
	RZ - Garnitur	PB3.0-Q10118
	WC - Garnitur	PB3.0-Q10113
	WC - Garnitur rot/weiß Anz.	PB3.0-Q101131
	WC - Garnitur rot/grün Anz.	PB3.0-Q101132
Wechsel-Garnitur		
	PZ-WG - Knopf ger. DIN R/L	PB3.0-Q10115/6
	PZ-WG - Knopf gekr. DIN R/L	PB3.0-Q101151/61
	PZ-WG - Zyl. Knopf ger. DIN R/L	PB3.0-Q101152/62
	PZ-WG - Zyl. Knopf versetzt DIN R/L	PB3.0-Q101153/63
Drückerpaar		
	ohne Rosetten	D10110

Technik:

Pullbloc® 3.0 Kugellagertechnik

Wartungsfreie Kugellager aus gehärtetem Stahl, 4 starke vorgespannte Druckfedern, Stütznocken, Basis aus glasfaserverstärktem Polyamid und selbstschneidende Durchzugsschrauben (ab 42 mm Türstärke: Gewindehülsen und M4 Schrauben).

